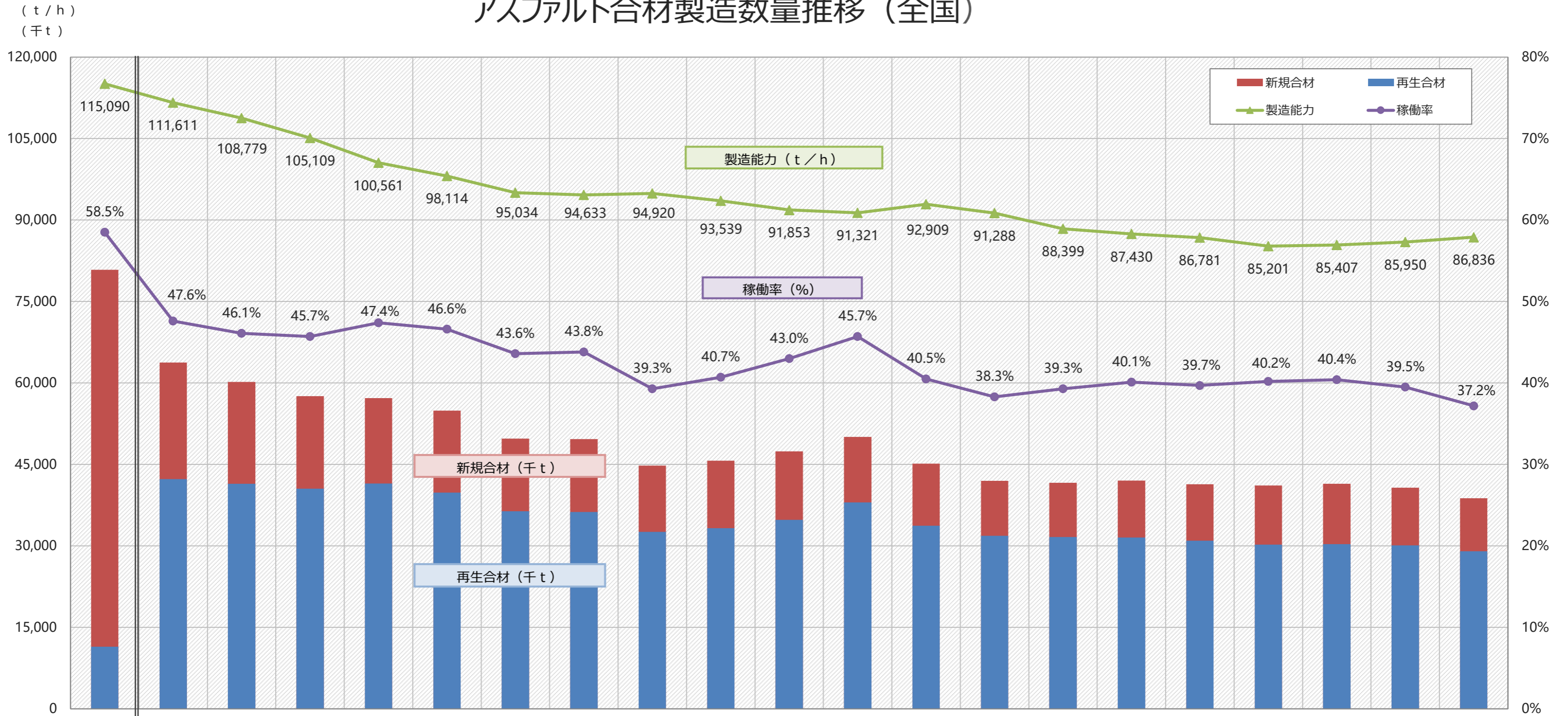


# アスファルト合材製造数量推移 (全国)



年度	1992	2003	2004	2005	2006	2007	2008	2009	2010	2011	2012	2013	2014	2015	2016	2017	2018	2019	2020	2021	2022
新規合材	69,417	21,503	18,764	17,030	15,745	15,084	13,366	13,454	12,236	12,454	12,629	12,063	11,424	10,130	9,992	10,524	10,366	10,869	11,132	10,623	9,781
再生合材	11,421	42,280	41,442	40,554	41,473	39,813	36,393	36,234	32,573	33,253	34,781	37,992	33,725	31,858	31,648	31,527	30,971	30,238	30,317	30,083	29,019
合計	80,838	63,783	60,206	57,584	57,218	54,897	49,759	49,688	44,809	45,707	47,410	50,055	45,149	41,988	41,640	42,051	41,337	41,107	41,449	40,706	38,800
前年比	106.5%	93.7%	94.4%	95.6%	99.4%	95.9%	90.6%	99.9%	90.2%	102.0%	103.7%	105.6%	90.2%	93.0%	99.2%	101.0%	98.3%	99.4%	100.8%	98.2%	95.3%
製造能力	115,090	111,611	108,779	105,109	100,561	98,114	95,034	94,633	94,920	93,539	91,853	91,321	92,909	91,288	88,399	87,430	86,781	85,201	85,407	85,950	86,836
稼働率	58.5%	47.6%	46.1%	45.7%	47.4%	46.6%	43.6%	43.8%	39.3%	40.7%	43.0%	45.7%	40.5%	38.3%	39.3%	40.1%	39.7%	40.2%	40.4%	39.5%	37.2%

一般社団法人 日本アスファルト合材協会 資料・広報委員会

※仮設プラント分を含む