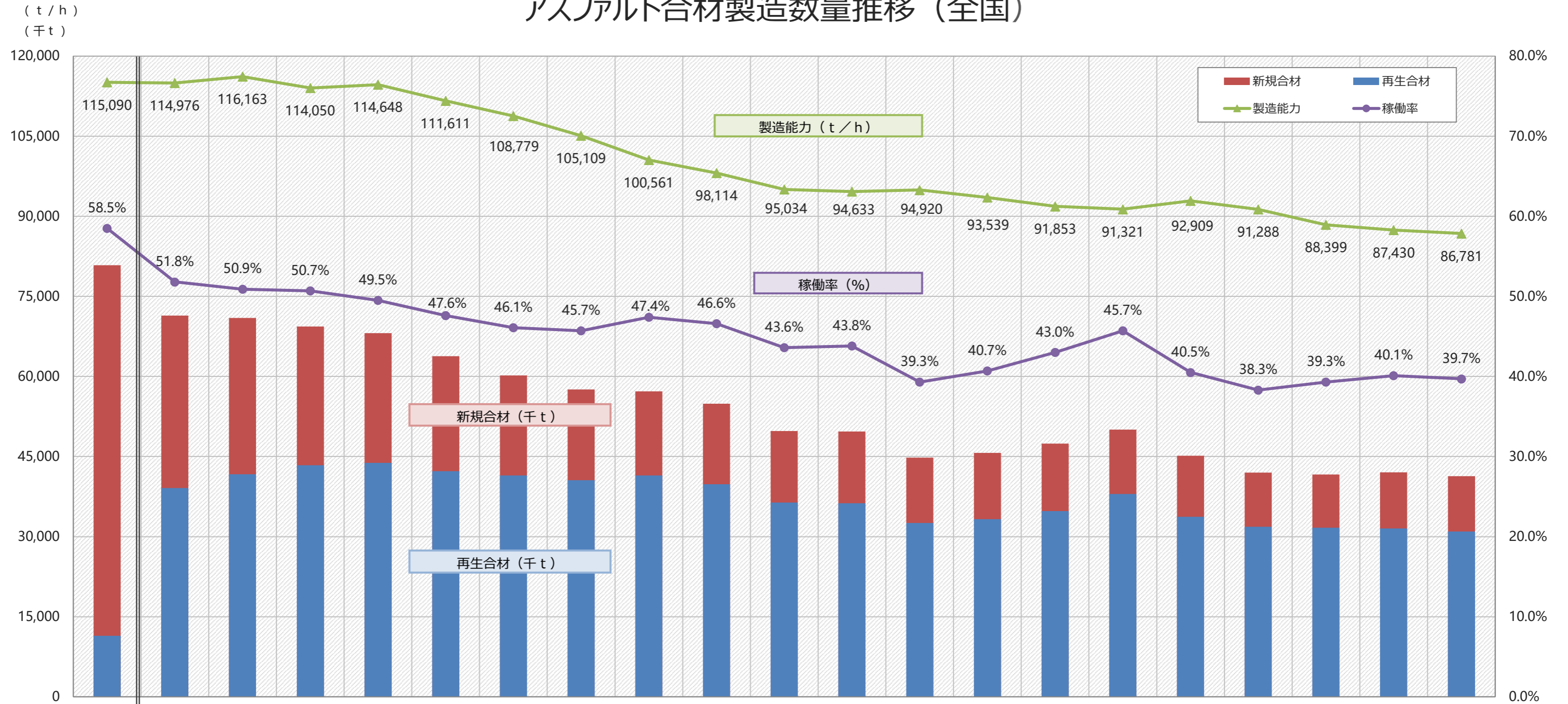


# アスファルト合材製造数量推移 (全国)



年度	1992	1999	2000	2001	2002	2003	2004	2005	2006	2007	2008	2009	2010	2011	2012	2013	2014	2015	2016	2017	2018
新規合材	69,417	32,293	29,292	25,978	24,301	21,503	18,764	17,030	15,745	15,084	13,366	13,454	12,236	12,454	12,629	12,063	11,424	10,130	9,992	10,524	10,366
再生合材	11,421	39,107	41,671	43,392	43,800	42,280	41,442	40,554	41,473	39,813	36,393	36,234	32,573	33,253	34,781	37,992	33,725	31,858	31,648	31,527	30,971
合計	80,838	71,400	70,963	69,370	68,101	63,783	60,206	57,584	57,218	54,897	49,759	49,688	44,809	45,707	47,410	50,055	45,149	41,988	41,640	42,051	41,337
前年比	106.5%	101.8%	99.4%	97.8%	98.2%	93.7%	94.4%	95.6%	99.4%	95.9%	90.6%	99.9%	90.2%	102.0%	103.7%	105.6%	90.2%	93.0%	99.2%	101.0%	98.3%

製造能力	115,090	114,976	116,163	114,050	114,648	111,611	108,779	105,109	100,561	98,114	95,034	94,633	94,920	93,539	91,853	91,321	92,909	91,288	88,399	87,430	86,781
稼働率	58.5%	51.8%	50.9%	50.7%	49.5%	47.6%	46.1%	45.7%	47.4%	46.6%	43.6%	43.8%	39.3%	40.7%	43.0%	45.7%	40.5%	38.3%	39.3%	40.1%	39.7%

一般社団法人 日本アスファルト合材協会 資料・広報委員会

※仮設プラント分を含む